

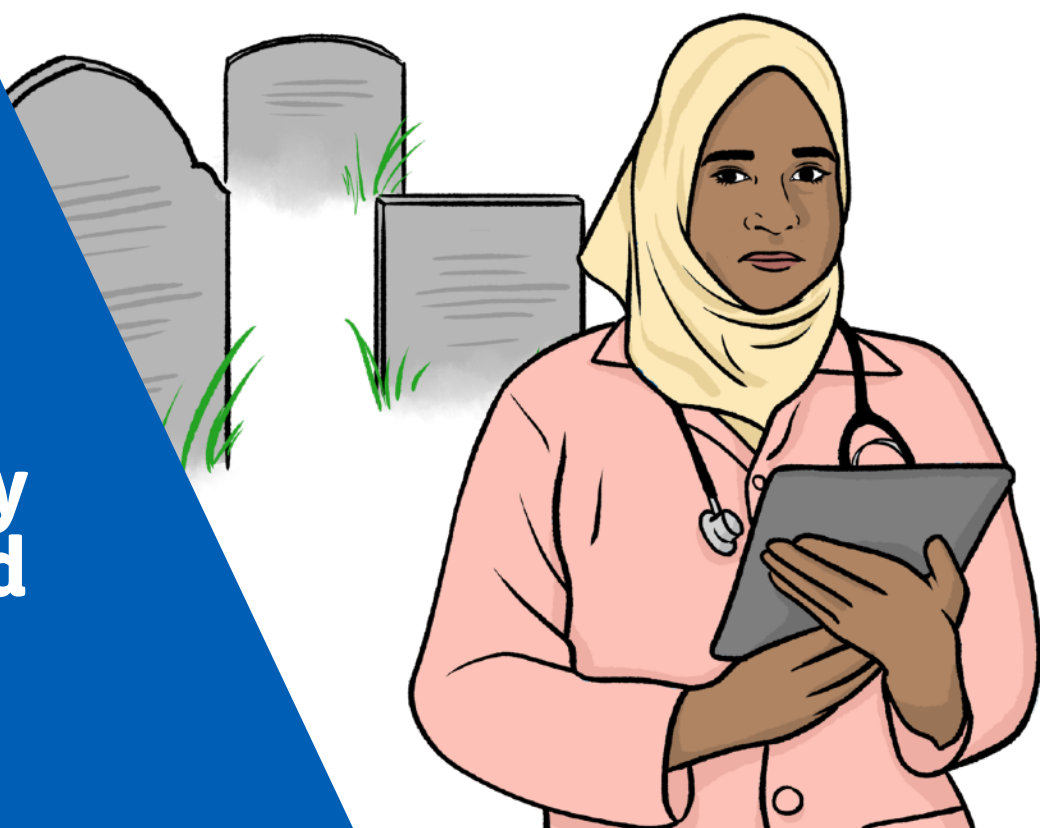
# LeDeR

Learning from deaths of  
people with a learning  
disability and autistic people

Annual Report 2021 to 2022



easy  
read

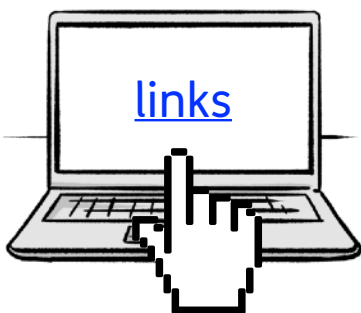


# Contents

|  | Page |
|--|------|
| Introduction                               | 3    |
| <hr/>                                      |      |
| LeDeR                                      | 5    |
| <hr/>                                      |      |
| LeDeR in Sefton                            | 6    |
| <hr/>                                      |      |
| How we will work differently in the future | 10   |
| <hr/>                                      |      |
| For more information                       | 12   |
| <hr/>                                      |      |



In this Easy Read document, difficult words are in **bold**. We explain what these words mean in the sentence after we have used them.



Some words are [blue and underlined](#).  
These are links that will go to another website which has more information.

# Introduction



NHS Sefton CCGs have to write a report every year about the number of people with a learning disability and autistic people who have died in:

- South Sefton.
- Southport and Formby.



The report is called 'Learning from deaths of people with a learning disability and autistic people', or 'LeDeR'.

We have to look into each death to see if:



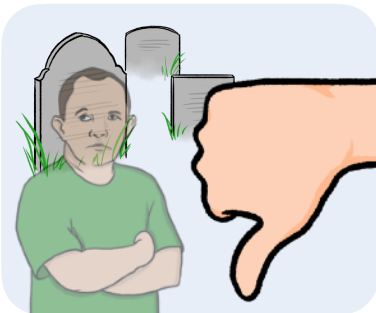
- We can learn how to keep people with learning disabilities and autistic people healthy for longer.



- We can stop people with learning disabilities and autistic people dying by caring for them better.



This document is our fourth report and it covers the year between 1 April 2021 and 31 March 2022.



Before this year, we didn't look at deaths of autistic people.



We started looking at the deaths of autistic people from January 2022.

# LeDeR



LeDeR was set up by the NHS in 2015.



It was set up because people with a learning disability and autistic people tend to die younger than other people.



The NHS wants people with a learning disability and autistic people to enjoy as long a life as other people.



All local health services were asked to look into the deaths of people with a learning disability and autistic people in their area.



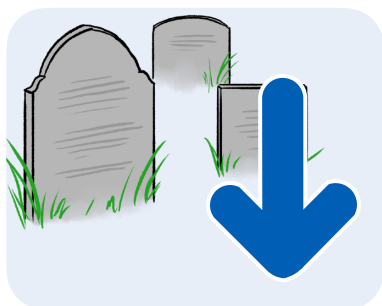
We try to finish looking into a person's death within 6 months.

# LeDeR in Sefton

## Number of deaths



This year we were told about 25 deaths.



This was less than last year.

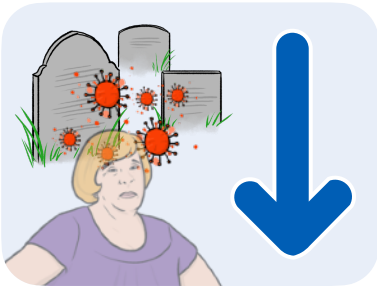
This could be because of:



- Better care.



- Health and care services not telling us about some deaths.



- Fewer people dying from COVID.



- More people having a **vaccine** for COVID.

A **vaccine** is an injection or jab that helps to stop you being ill with a certain illness.

# Age, gender and ethnicity



Most of the people who died this year were over 26 years old.



About the same number of men and women died.



All of the people who died were White British.



# Causes of death



The most common reason people died was **pneumonia**.

**Pneumonia** is an illness that affects your lungs.



The next most common cause of death was **epilepsy**.

**Epilepsy** is a problem with the brain.

# How we will work differently in the future



We are changing the way we do LeDeR reports.



Our changes include:

- We will be able to wait more than 3 months to start looking at a death.

- We will look more carefully at deaths where:

- A person from an **ethnic minority** has died.

An **ethnic minority** is a small group of people of the same race, in a place where most other people are a different race.





- We think there is something we could have done better.



- We will have someone with a learning disability and an autistic person in our meetings to discuss LeDeR reports.

# For more information

## South Sefton



You can look at our website here:

[www.southseftonccg.nhs.uk](http://www.southseftonccg.nhs.uk)

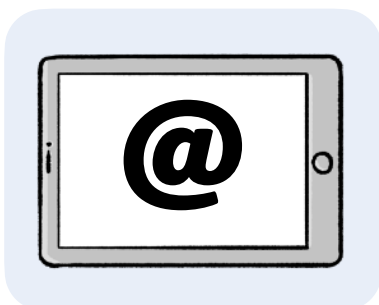
If you need more information please contact us by:



- Post:  
Magdalen House  
Trinity Road  
Bootle  
L20 3NJ



- Phone: 0151 317 8456



- Email:  
[southsefton.ccg@nhs.net](mailto:southsefton.ccg@nhs.net)

# Southport and Formby

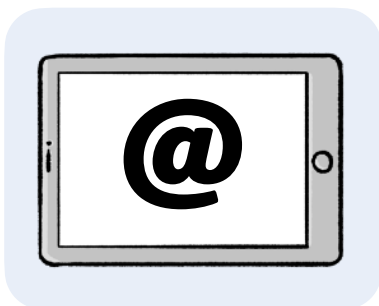


You can look at our website here:  
[www.southportandformbyccg.nhs.uk](http://www.southportandformbyccg.nhs.uk)

If you need more information please contact us by:



- Phone: 01704 395785



- Email:  
[southportandformby.ccg@nhs.net](mailto:southportandformby.ccg@nhs.net)

This Easy Read information has been produced by [easy-read-online.co.uk](http://easy-read-online.co.uk)